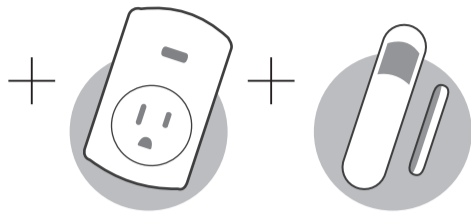
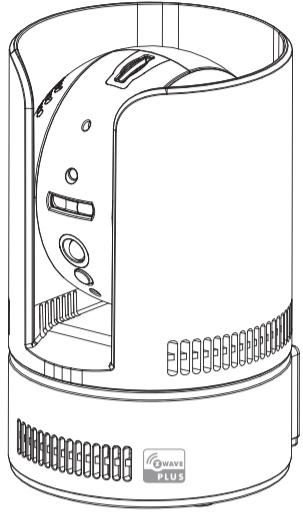


Setup the camera from a Smartphone/Tablet

Smart Home Kit



- iOS iPhone 、 iPad
Requires iOS 6.0 or later
 - Android Smart phone 、 Tablet
Requires Android 4.0 or Later
- Only the iPhone / Android App support the Z-wave functions.
IC731z is the pan/tilt camera with Z-Wave controller inside.

Download the mCamView Z+ user manual here
<http://www.starvedia.com/download.html>



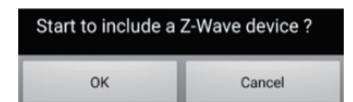
STEP 4 Add a Z-Wave Device

To include(pair) a Z-wave device into the camera :

- 1.Set the camera into inclusion mode
 - a.Tap the “DEVICE” icon on the App
 - b.Tap “+” and “OK”
 - c.A “beep” sound is generated by the camera to start the inclusion mode
- 2.Set the Z-wave device into inclusion mode
(Please check the user manual of the Z-Wave device to set the inclusion mode)

- 3.When the camera recognize the Z-Wave device, a “doo” and then a success sound will be generated by the camera

* Notice : If the device failed to be added to the camera, please check
(1).If the Z-Wave frequency of the device is the same as the camera.
(2).May need to exclude the device first,please tap “-” under “DEVICE” to do the exclusion procedure.



STEP 1 Download the mCamView Z+ APP



mCamView Z+

Scan the QR code to download the software “mCamView Z+” from App Store for iPhone/iPad or from Android Market for Android devices.

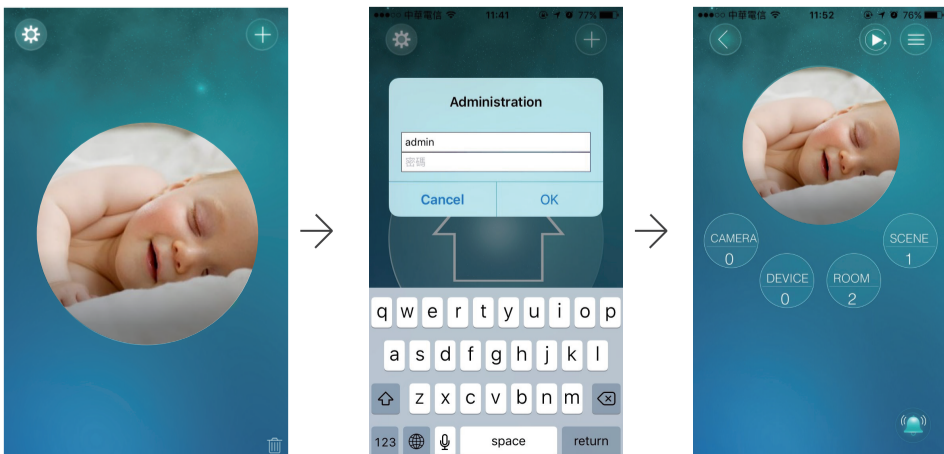
STEP 2 Setup the camera

Please click the “+” icon on the App and follow the instructions to setup the camera.

STEP 3 Log into the Z-WAVE CAMERA

Tap the camera icon to log into the camera.
Key in the administration account to log in.
The default administration account is “admin”,
the default administration password is empty (leave blank).
After logged in, tap the camera icon to play the live video.

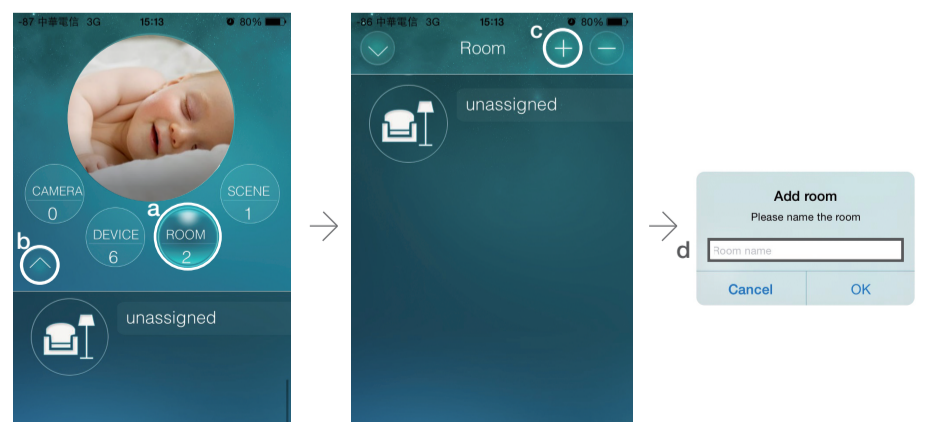
* Notice : there are two passwords for the Z-Wave camera,
one is the admonistration password, the other one is the video play password.



STEP 5 Add a new room

- a Tap the "ROOM" icon.
- b Tap “^”.
- c Tap “+” to add a new room.
- d Name the room.

After a room is added, click the room icon to add Z-Wave devices into the room. If there are temperature sensor and humidity sensor in the room, the temperature and humidity value will be displayed on the room icon.
If there is a camera installed in a room, add that camera into the room, then the camera video will be displayed for the room when this room is clicked in the live video display.



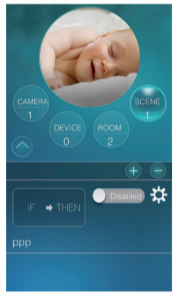
STEP 6 Add a new scene

Each home can create up to 20 scenes, and each scene consists of IF/THEN/WHEN elements.

“IF” is the conditions that will trigger this scene, up to 6 conditions are allowed in each scene, these conditions could be “and/or” operated. The “IF” conditions could be set according to the status of the Z-Wave devices, room conditions or Z-Wave camera status.

“THEN” is the actions of this scene, up to 6 actions are allowed in each scene. The “THEN” actions could be the actions of the Z-Wave devices, room actions or Z-Wave camera actions.

“WHEN” allows this scene conditions to be checked always, every day, every week or during some time period.




- a Tap "+" to add a scene.
 - b Name the scene.
 - c Do the scene settings.
- For more details, please see the mCamView Z+ user manual.

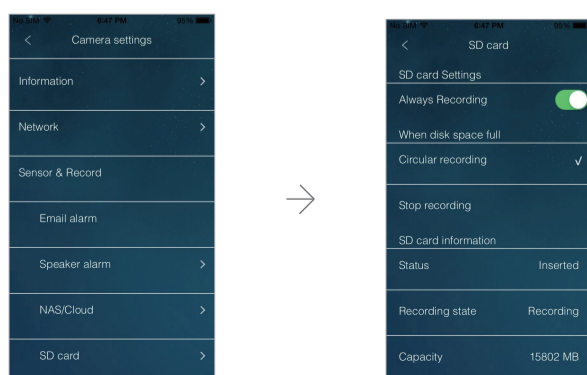
STEP 7 Scene Interface



- a Back to previous page
- b Add a scene
- c Remove scenes
- d Tap to program the scene
- e Enable/Disable this scene
- f Do the scene actions
- g Rename a scene or change its ICON
- h Enable/Disable alarm (push) notifications while this scene is triggered

SD Card Recording * Note: Class 10 micro SD is prerequisite

- a Insert the SD card into the camera, the yellow LED on the camera will be blinking.
- b The SD card will start to do the recording once the alarm notification is triggered. The camera will do 5 second pre-recording to prevent the loss of the important starting moment.
- c To enable the continuous SD card recording, please enable it inside the camera settings.
- d To playback the recorded video, tap the  on the upper right corner of the App and choose the “SD Card”. Choose from the camera list and date/time to do the playback.



Alarm Notification

The App will get alarm notification when one of the following events happened.

- a When the Z-Wave device changed status.
- b When the scene is triggered.
- c When the camera event is triggered, like the sound or motion detection.

All the trigger events could be set and be enabled or disabled. Please refer to the user manual for detailed settings.

FAQs

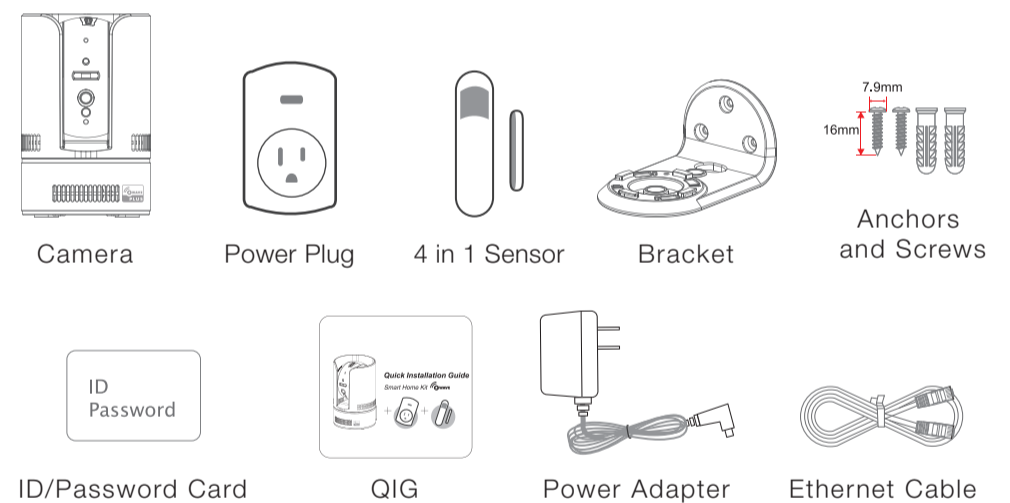
- Q1** What should I do if I have forgotten the password or the ID/Password card is missing?
Ans Please press the Reset button for five seconds. The camera will reset to the factory default settings. The default video-play password is ipcam(lowercase).
- Q2** What should I do if I cannot see the video remotely?
Ans The red LED of the camera should be remain on when the camera is connected to the Internet. If the red LED is blinking, please double check the network connection and settings again.
- Q3** I can see the video in a remote place, but the video quality is not good and sometimes the video would disconnect and then reconnect again by itself.
Ans It's probably because the internet bandwidth (internet speed) is not big enough. Please try to apply for a better internet connection from your Internet Service Provider or decrease the bandwidth setting of the camera.
- Q4** What is the default admin user name/password?
Ans Default admin user name: admin
 Default admin password: _____ (leave blank)
- Q5** Where to download the latest mCamView Z+ App?
Ans Please scan the QRCode.

mCamView Z+
for ios / Android



More FAQs, please visit www.starvedia.com/download.html#faq

Package Contents



Product View

